



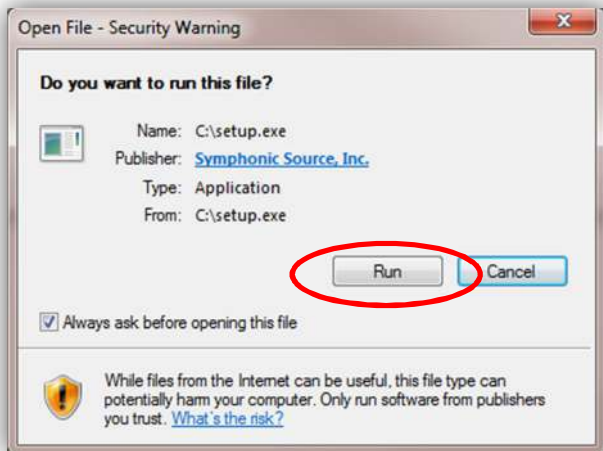
PRODUCT DOCUMENTATION

HOW STUFF WORKS

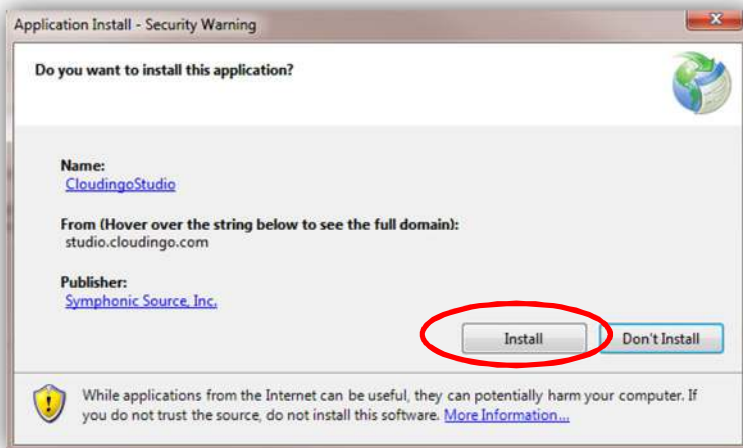
Symphonic Source, Inc.
4100 McEwen Dr. Dallas, TX 75244

TO INSTALL CLOUDINGO STUDIO

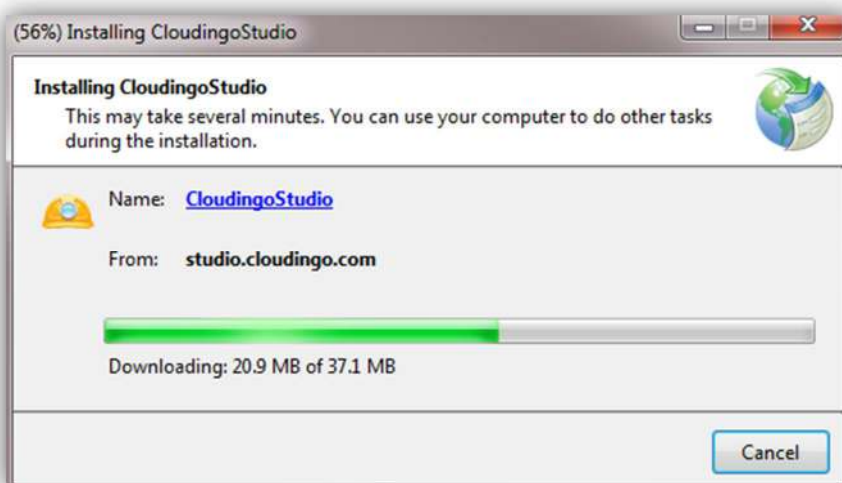
1. Download the Cloudingo Studio installer and click the **Run** button to begin the initial installation process.



2. Cloudingo Studio will download the installation package. Click **Install** to complete installation.



3. The installation process may take a few minutes to complete.



REGISTERING CLOUDINGO STUDIO

After the installation has completed you will need to register Cloudingo Studio to get a license. A registration menu will appear after installation. (If it does not appear, try pressing Alt-Tab on your keyboard to see it, or minimize windows until you see it).

1. Enter your registration details, select **I Agree**, and click **Register**. After registering you will receive an email with a new license key.
2. Enter your license key in the designated cell.
3. Accept to the license agreement, and click **Validate License**.

Cloudingo Studio Registration

License Key: 1LK57SBWVXTODPG Validate License

I agree [to end user license agreement](#)

Get your FREE license key by filling in the form below.
This is how the Cloudingo team manages support/enhancement requests.

First Name:

Last Name:

Email Address:

Company:

I agree [to end user license agreement](#)

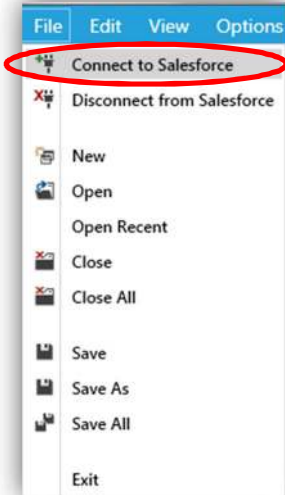
Register

Cancel

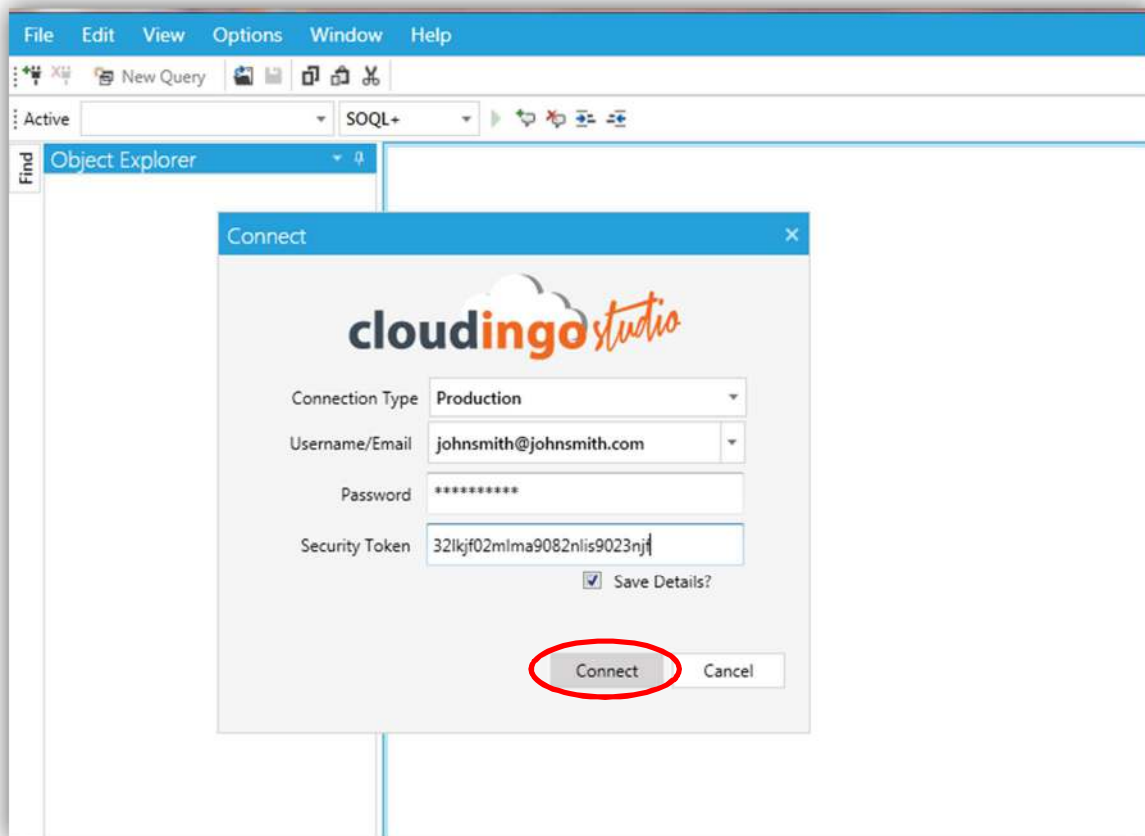
4. You are now ready to connect to Salesforce.

CONNECT TO SALESFORCE (BASIC USE)

1. Launch Cloudingo Studio
2. Open the File menu and select **Connect to Salesforce** as shown below:



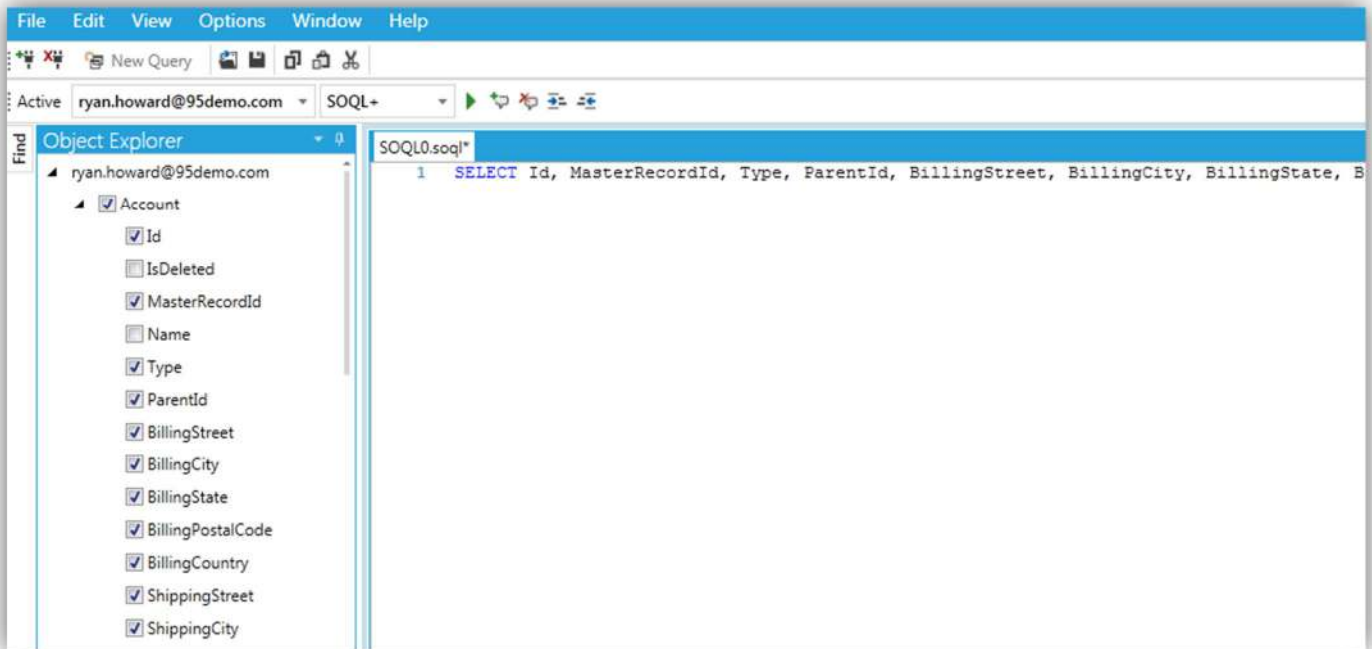
3. Enter your Salesforce credentials in the popup dialogue box.
4. Click **Connect** and start using Cloudingo Studio for your Force.com development!



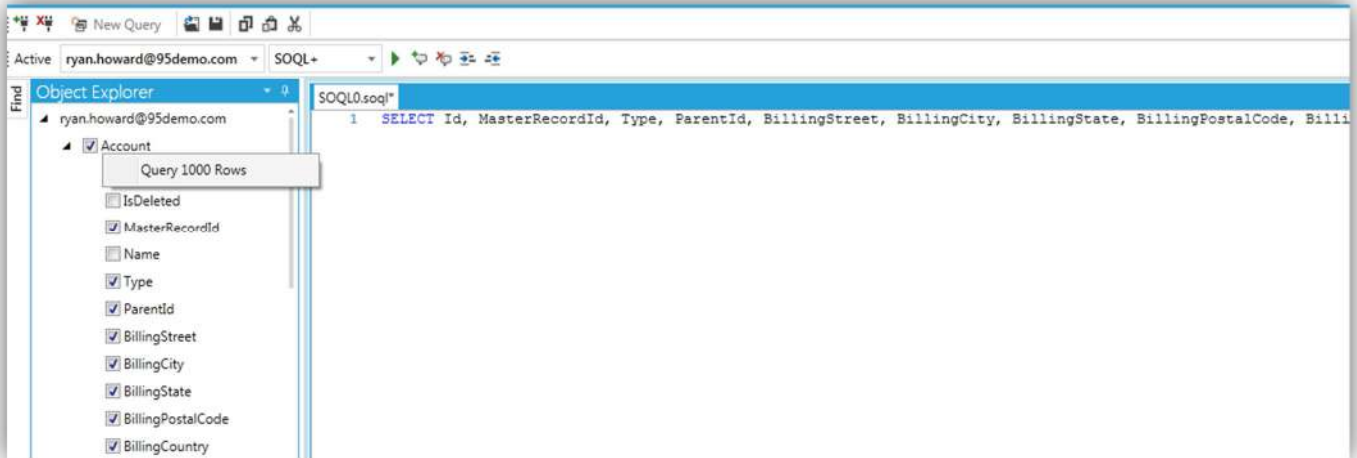
FEATURES (BASIC USE)

QUERY BUILDER

By clicking on one of the Orgs, Cloudingo Studio will automatically create a new query based on selected fields. Uncheck or check different fields to alter the query on-the-fly:

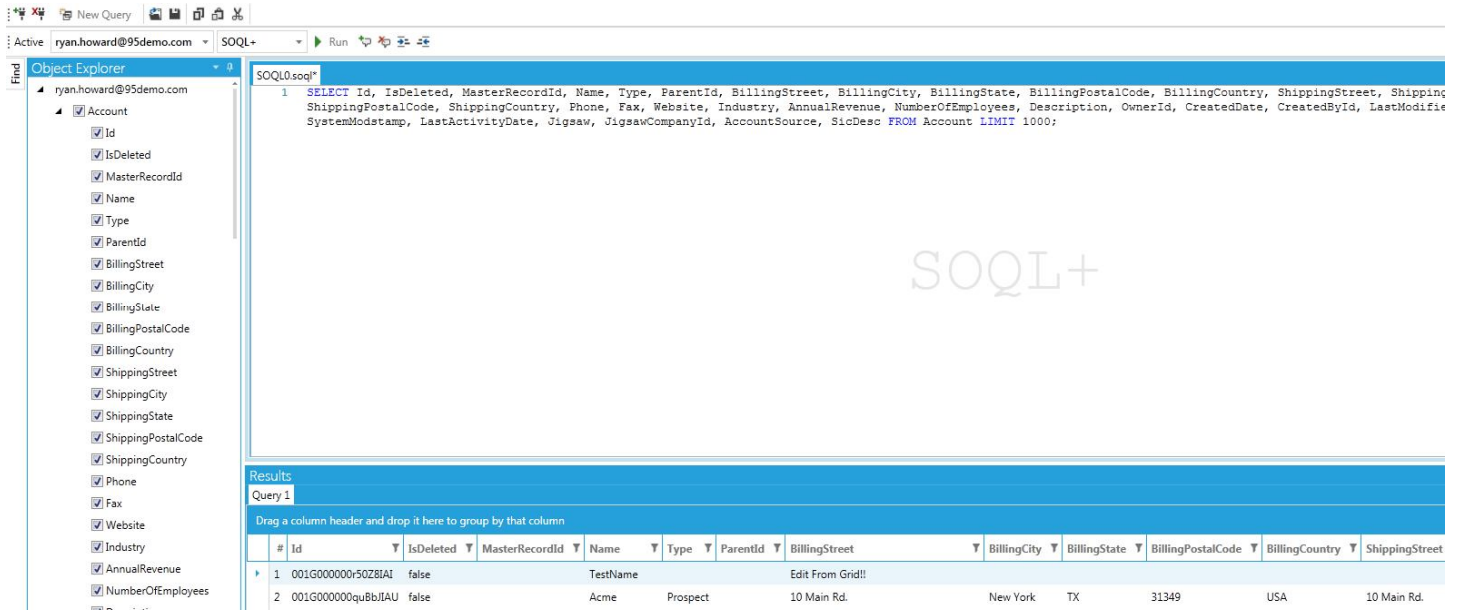


Or right-click an account org and generate a new query. There is a 1000 row limit based on selected fields:

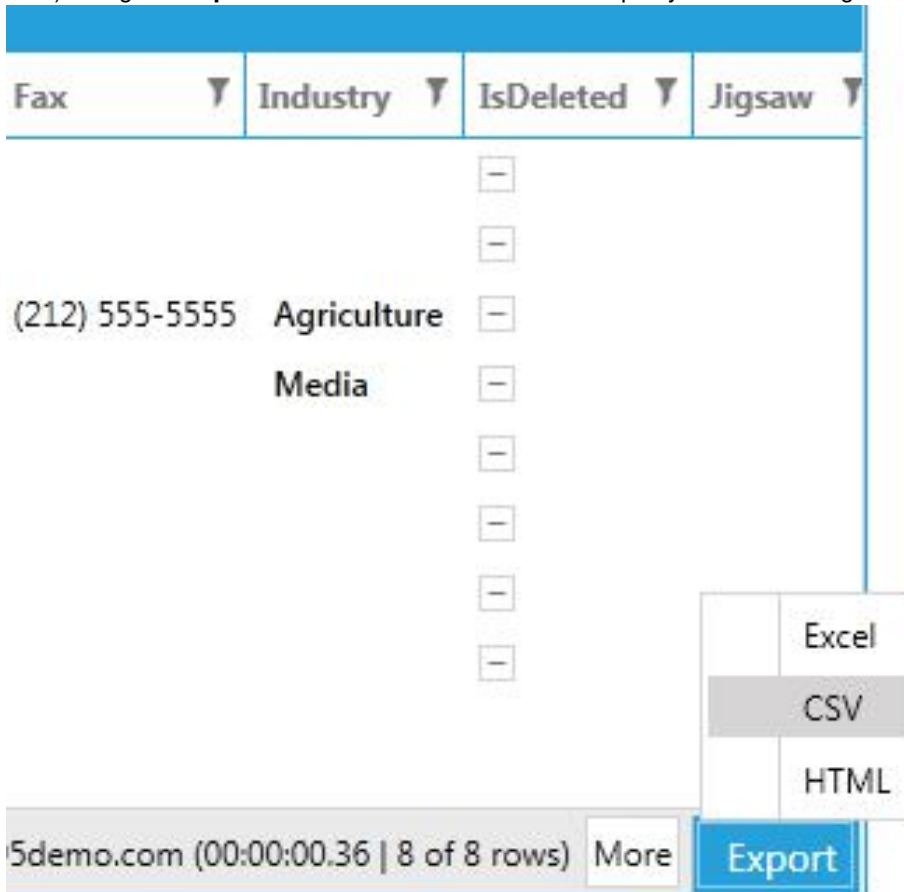


Once you have created the query, execute it by clicking the green arrow button in the task bar, or pushing F5 on your keyboard. The results will display in a grid just below your query (ies). You'll notice that every query generated includes

a semicolon at the end. The semicolon is a Cloudingo Studio requirement for queries that are more than one statement long. This requirement helps our parsing engine better understand which queries you want to run individually:



Once you have executed a new Salesforce query, you optionally export it in four different formats (Excel, CSV, HTML, or Text) using the **Export** button located between the query window and grid results:



Sometimes queries will be written that contain a parsing error that Salesforce cannot interpret. When that happens, you'll see errors displayed on the Messages tab in the grid results window as shown below. This will give you a general idea of what the problem is:

SOQL+

```

1 SELECT Id, IsDeleted, MasterRecordId, Name, Type, ParentId, BillingStreet, BillingCity, BillingState, BillingPostalCo
2 ShippingPostalCode, ShippingCountry, Phone, Fax, Website, Industry, AnnualRevenue, NumberOfEmployees, Description, Ow
3 SystemModstamp, LastActivityDate, Jigsaw, JigsawCompanyId, AccountSource, SicDesc FROM Account LIMIT 1000;
2
3 SELECT Id, IsDeleted, MasterRecordId, AccountId, LastName, FirstName, Salutation, Name, OtherStreet, OtherCity, Other
MailingPostalCode, MailingCountry, Phone, Fax, MobilePhone, HomePhone, OtherPhone, AssistantPhone, ReportsToId, Email
OwnerId, CreatedDate, CreatedById, LastModifiedDate, LastModifiedById, SystemModstamp, LastActivityDate, LastCUREques
JigsawContactId FROM Contact LIMIT 1000;

```

Messages

Error running Query: INVALID_FIELD:
 SELECT Id, IsDeleted, MasterRecordId, Name, Type, ParentId
 ^
 ERROR at Row:1:Column:23
 No such column 'MasterRecordId' on entity 'Account'. If you are attempting to use a custom field, be sure to append the '_c' after the custom field name. Please reference your WS

A useful feature you will find built into Cloudingo Studio is the ability to edit org data directly from your grid results. To edit grid data, simply double-click on a data cell in your grid and enter a new value. Once complete, simply click away from that cell's row and your data will be automatically saved to your org:

```

3 SELECT Id, IsDeleted, MasterRecordId, AccountId, LastName, FirstName, Salutation, Name, OtherStreet,
MailingPostalCode, MailingCountry, Phone, Fax, MobilePhone, HomePhone, OtherPhone, AssistantPhone, Re
OwnerId, CreatedDate, CreatedById, LastModifiedDate, LastModifiedById, SystemModstamp, LastActivityDa
JigsawContactId FROM Contact LIMIT 1000;

```

Results

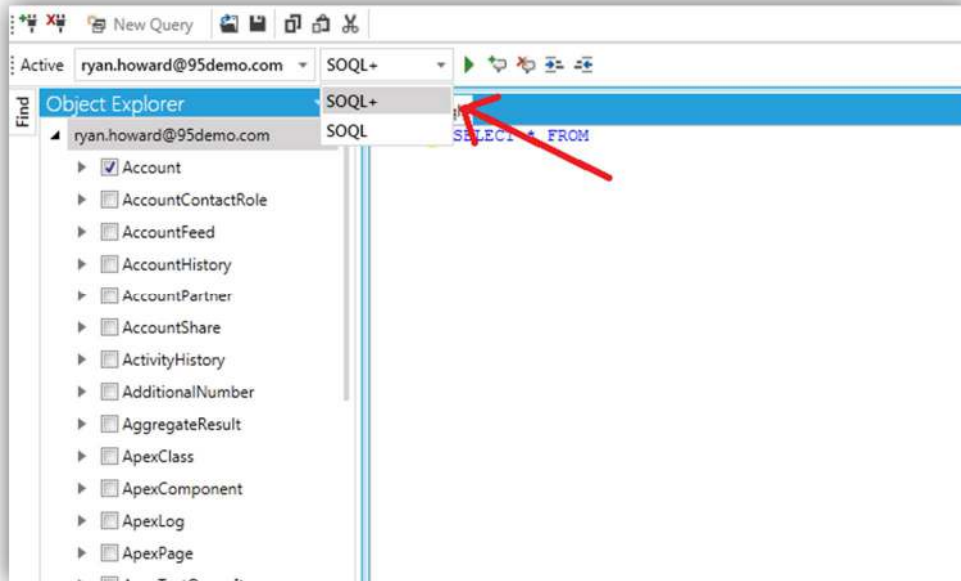
Query 1 Query 2

Drag a column header and drop it here to group by that column

#	Id	IsDeleted	MasterRecordId	Name	Type	ParentId	BillingStreet	Billing
1	001G000000r50Z8IAI	false		TestName			Edit From Grid!!	
2	001G000000quBbJIAU	false		Acme	Prospect		10 Main Rd.	New Yc
3	001G000000quBbKIAU	false		salesforce.com	Customer		The Landmark @ One Market, Suite 300	San Fra
4	001G000000quBbLIAU	false		Global Media	Prospect		150 Chestnut Street	Toront

SOQL+ (ADVANCED FEATURES)

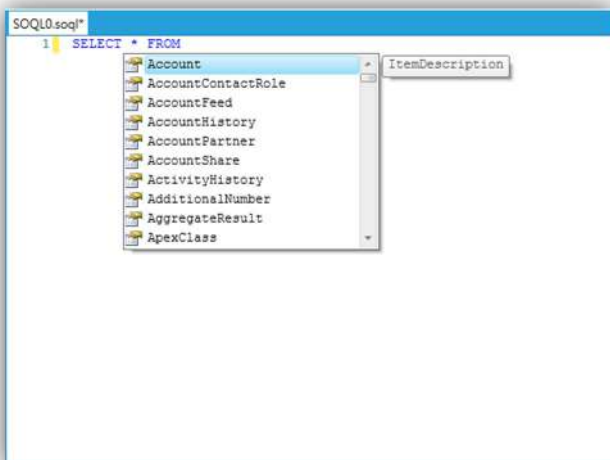
Cloudingo Studio has been outfitted with a new extension of Salesforce's SOQL query language, named SOQL+. With SOQL+, the team at Symphonic Source added slick new enhancements to enable faster and more powerful queries against your Salesforce Org. Just ensure your query language setting is set to SOQL+ in the language selector, and you're good to go:



Some of the SOQL+ features include:

ENHANCED INTELLISENSE

Whether you're creating a unique SOQL+ query or just a basic select, Intellisense will assist you in creating the query faster than ever by displaying the available objects to query from and the functions you can perform on them:



SELECT ALL QUERIES

By typing in “SELECT * FROM Account”, or “SELECT * FROM” any org, you can automatically pull back all the fields associated with that org without having to type them all out one-by-one!

INSERT, UPDATE, AND DELETE STATEMENTS

We’ve created a sweet translation engine that allows you to run SQL type queries in the Cloudingo Studio editor. Cloudingo Studio converts them into API calls so whether you just want to do a quick update or clear out records by a specific field type, Cloudingo Studio has you covered. Here are a few examples:

Use an UPDATE statement to change the name field on an account in your org. Update statements should, when referencing fields, surround the values with single quotes as shown below:

```
UPDATE Account SET Name = 'Updated Names' WHERE Id = '001G000000r50nhIAA';
```

A standard INSERT statement follows the same general rule when referencing field values. The breakdown for an insert statement is shown with an example below:

```
INSERT INTO Account (Name) VALUES ('New Account Field');
```

Below is a standard DELETE statement where Cloudingo Studio removes one of the account records from the connected org. Field references using single quotes still apply:

```
DELETE FROM Account WHERE Name = 'New Account Field';
```

LOOPING, AND VARIABLES:

Along with SOQL+, we’ve also added in some custom looping, and variable functionality. You can now create custom variables, assign variables to other variables (Scope is also taken into consideration. A variable created within a ‘while’ loop has higher priority than one created in the general query statement), and increment/decrement variables using the ‘+=’ or ‘-=’ statements:

The following example will create a new grid query result on each loop iteration, and will continue to loop while var1 is less than var2, and is incremented on each loop by adding the value of var3 to var1:

```
var var1 = 1;
var var2 = 10;
var var3 = 1;

while(var1 < var2)
{
SELECT * FROM Account LIMIT 1000;

var1 += var3;
}
```

‘while’ loops can have up to 6 different types of value comparisons:

Note equal: !=

Greater than or equal to: >=

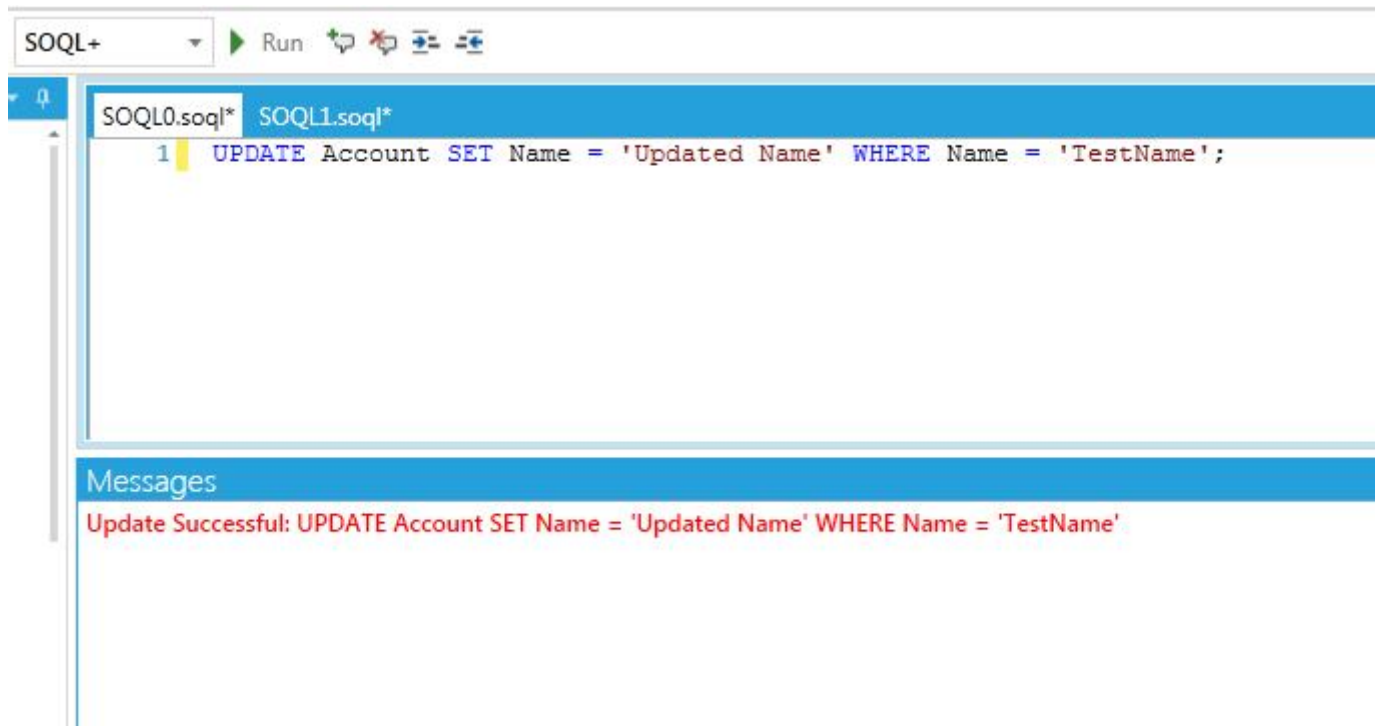
Less than or equal to: <=

Equal to: =

Greater than: >

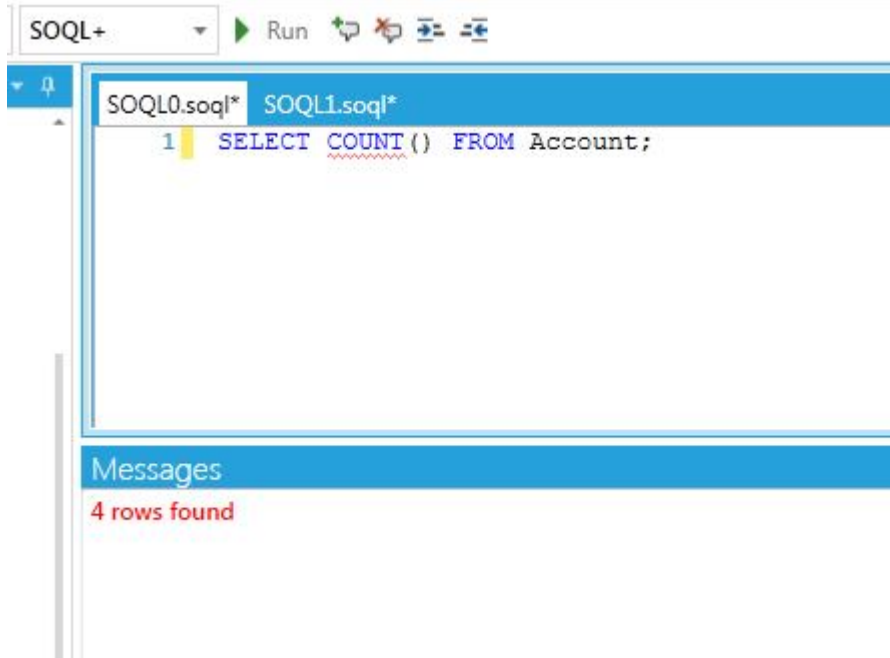
Less than: <

All changes using SOQL+ statements will show results in the “Messages” tab on the results pane:



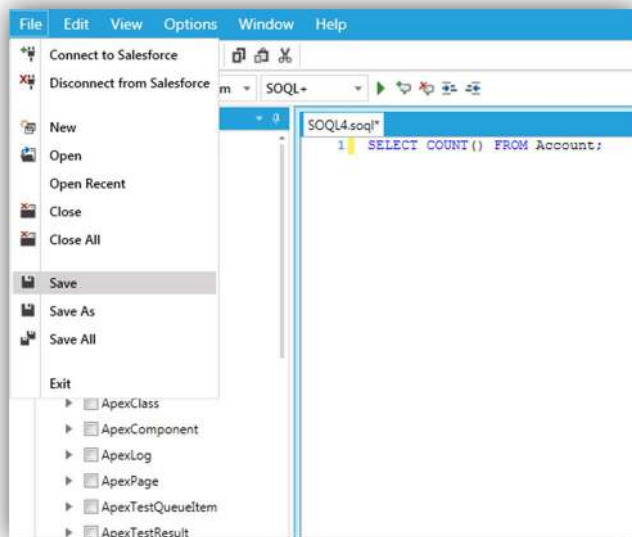
ROW COUNT USING SELECT COUNT

We've also created a way to get the number of rows on a specified org by simply typing "SELECT COUNT() FROM SomeOrg;". After executing that query you'll see the results in the Messages area on the results pane:

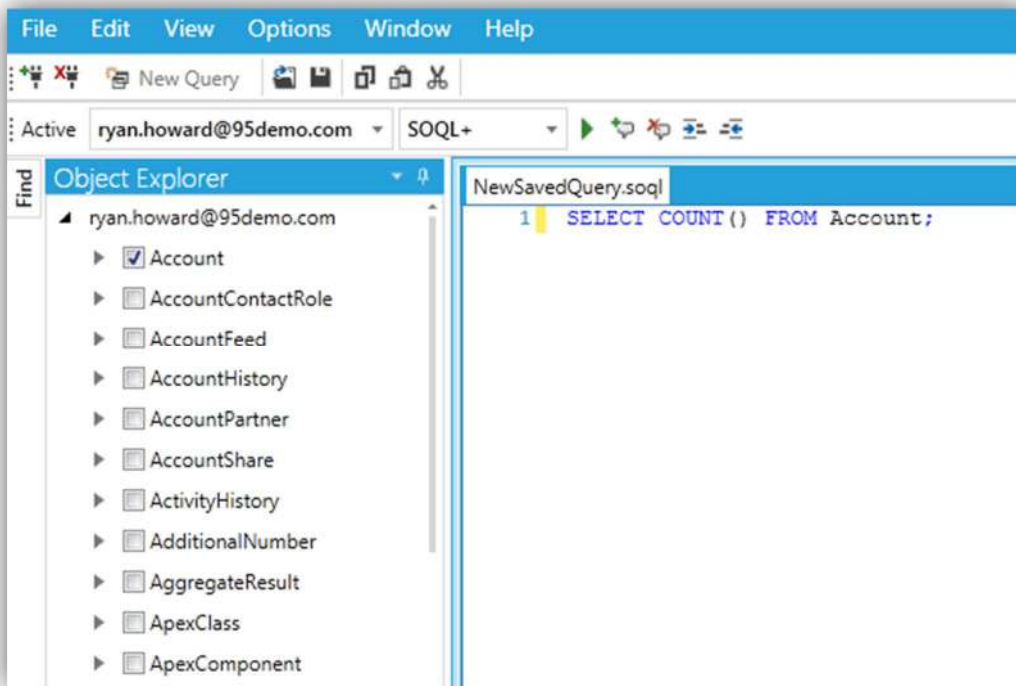


SAVING/ OPENING SOQL QUERY FILES (ADVANCED USE)

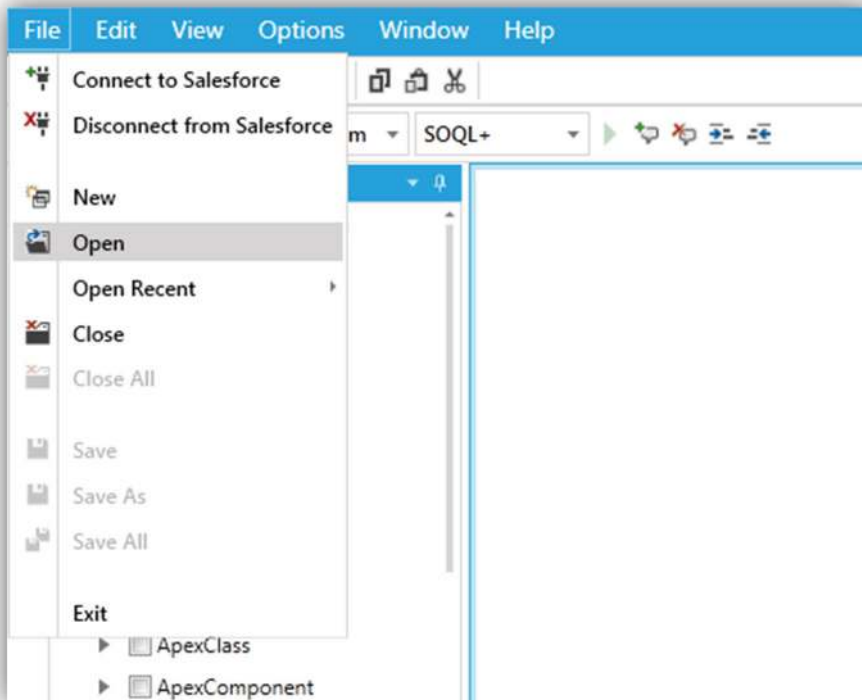
Cloudingo Studio provides you a way to save and open previous SOQL/SOQL+ files directly to your file system. Once ready to save a new query, simply go to the File menu, and click **Save**:



A save dialog popup will appear allowing you to specify the file. Once saved, the tab will be renamed and the asterisk will disappear:



To open a SOQL/SOQL+ file you have previously saved, simply go back to the File menu, and select "Open":

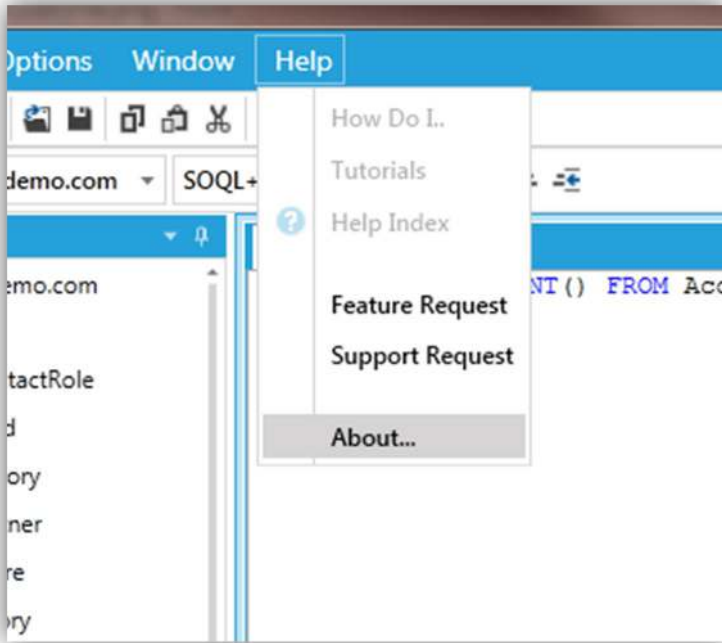


An open file dialog will appear. Simply navigate to the file you want to open, select it, and click the **Open** button on the dialog box. The saved query will open in a new tab.

TROUBLESHOOTING

GETTING CLOUDINGO STUDIO'S VERSION NUMBER:

Sometimes you'll need to obtain the current version number of your copy of Cloudingo Studio. To do this, simply go to the Help menu, and select **About**. A popup box will appear displaying the version of Cloudingo Studio.



LOCATING CLOUDINGO STUDIO ERROR LOG

By default, Cloudingo Studio writes an error log in its working directory. To access this log, do the following:

- 1) Start-up Cloudingo Studio.
- 2) Right-click on your windows task bar and select **Start Task Manager**, select the **Applications** tab, and find Cloudingo Studio in the list of running applications.
- 3) Right-click on Cloudingo Studio in the list of applications, and select **Go to Process**.
- 4) In the list of processes you'll see the Cloudingo Studio process. Right-click that process and select **Open file location**.
- 5) The location of the running application will pop-open. Inside that folder you'll find the Cloudingo Studio log, labeled "CloudingoStudio.log".

Shortcut keys

Connect to Salesforce	CTRL + i
Disconnect from Salesforce	CTRL + d
Open Query	CTRL + o
Save Query	CTRL + s
Copy	CTRL + c
Paste	CTRL + v
Cut	CTRL + x
Execute Query	F5